

LAPPEENRANTA UNIVERSITY OF TECHNOLOGY
DEPARTMENT OF INFORMATION TECHNOLOGY

**BAYESIAN CLASSIFICATION USING GAUSSIAN
MIXTURE MODEL AND EM ESTIMATION:
IMPLEMENTATIONS AND COMPARISONS**

Correctly 3D-projected graphs.

Information Technology Project

Examiner: Professor Pekka Toivanen

Supervisors: Researcher, Dr.Tech. Joni Kämäräinen, Professor Heikki Kälviäinen

Lappeenranta, June 23, 2004

Pekka Paalanen

Leirikatu 2 G 10

53600 Lappeenranta

Tel. 050 321 0527

paalanen@lut.fi

<http://www.iki.fi/pq/>

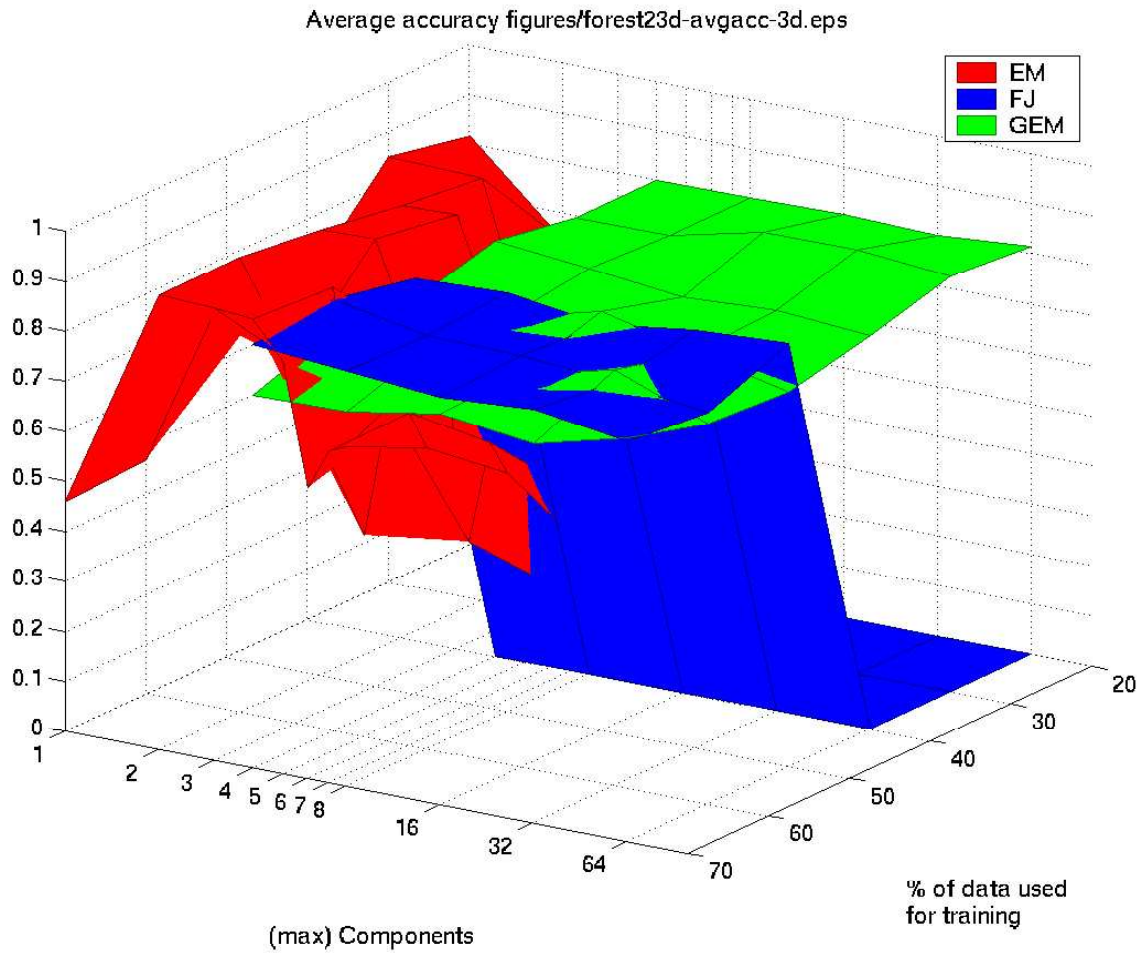


Figure 1: 23-d forest data, average classification accuracy.

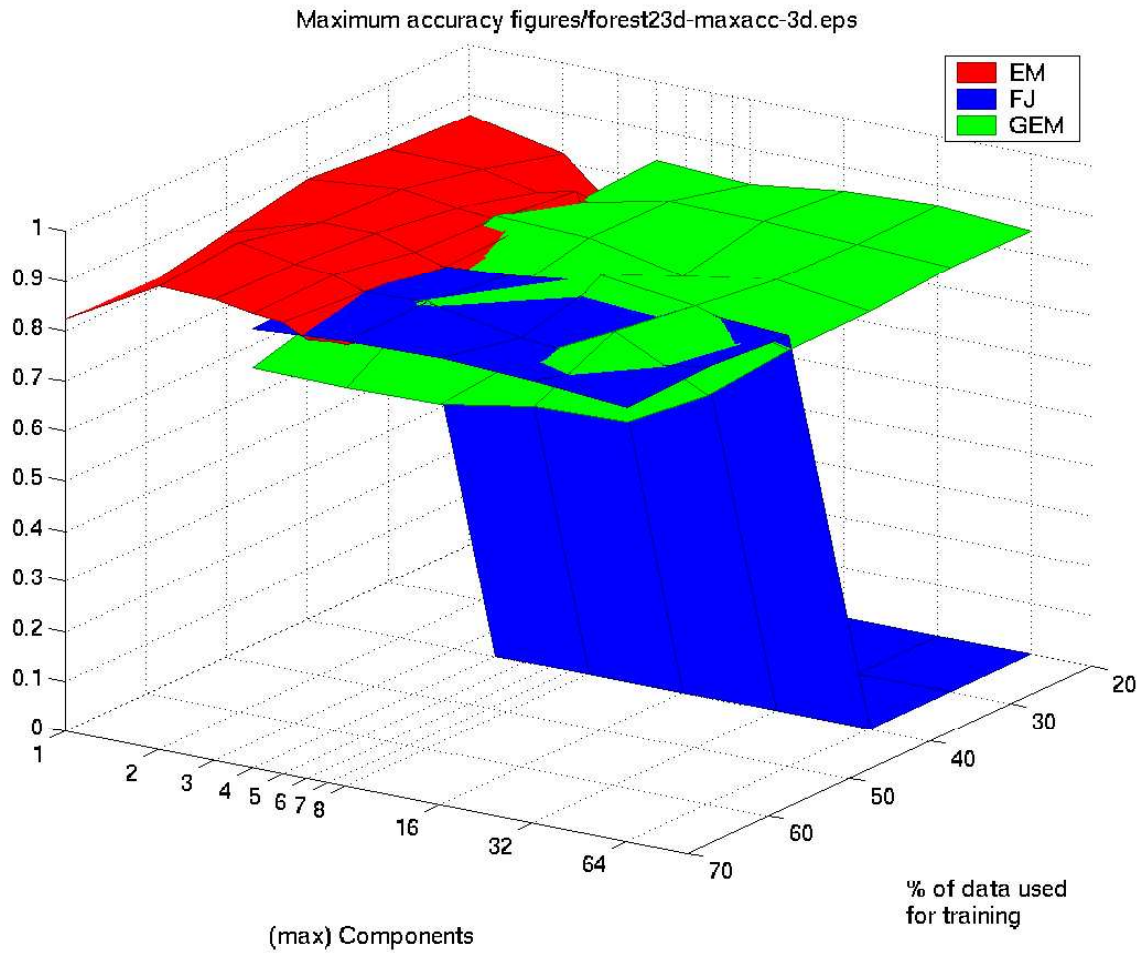


Figure 2: 23-d forest data, maximum classification accuracy.

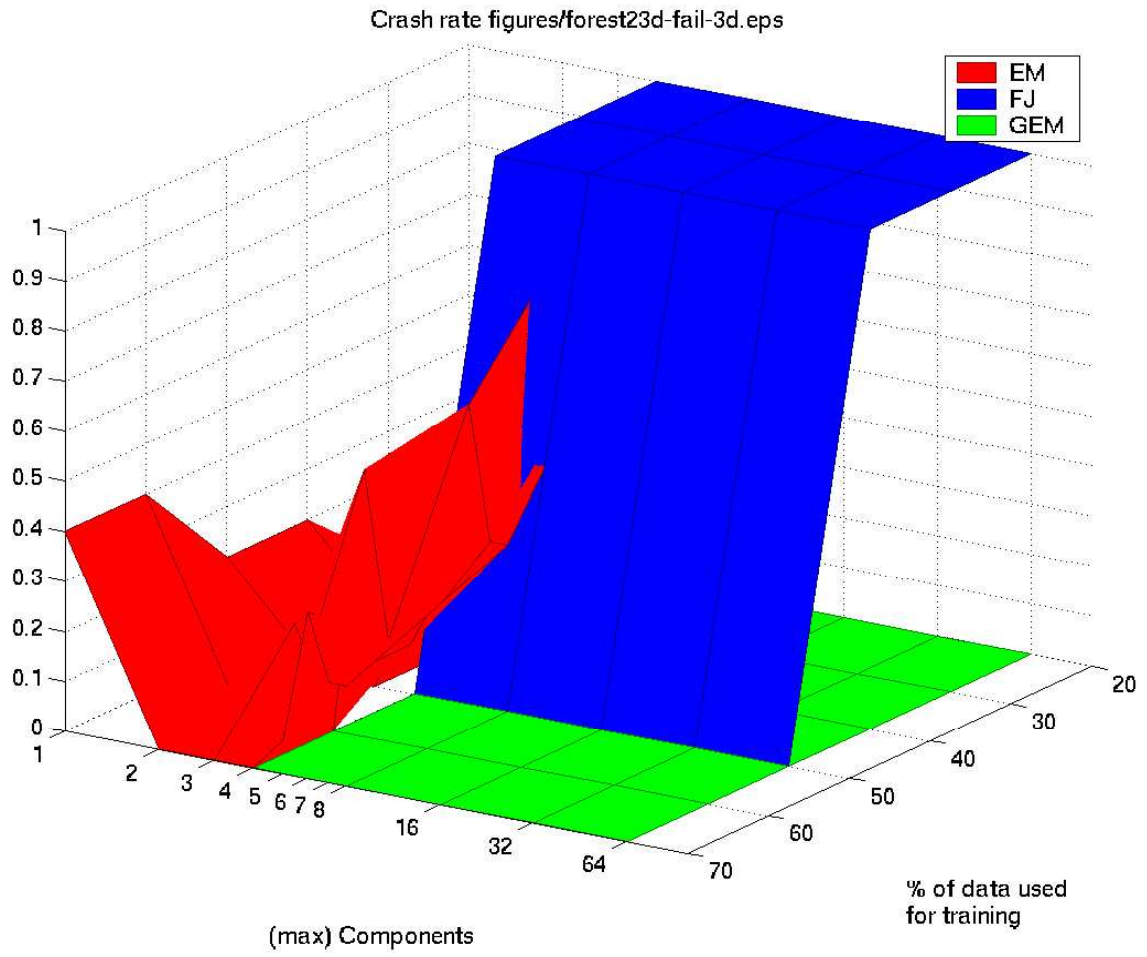


Figure 3: 23-d forest data, crash rate.

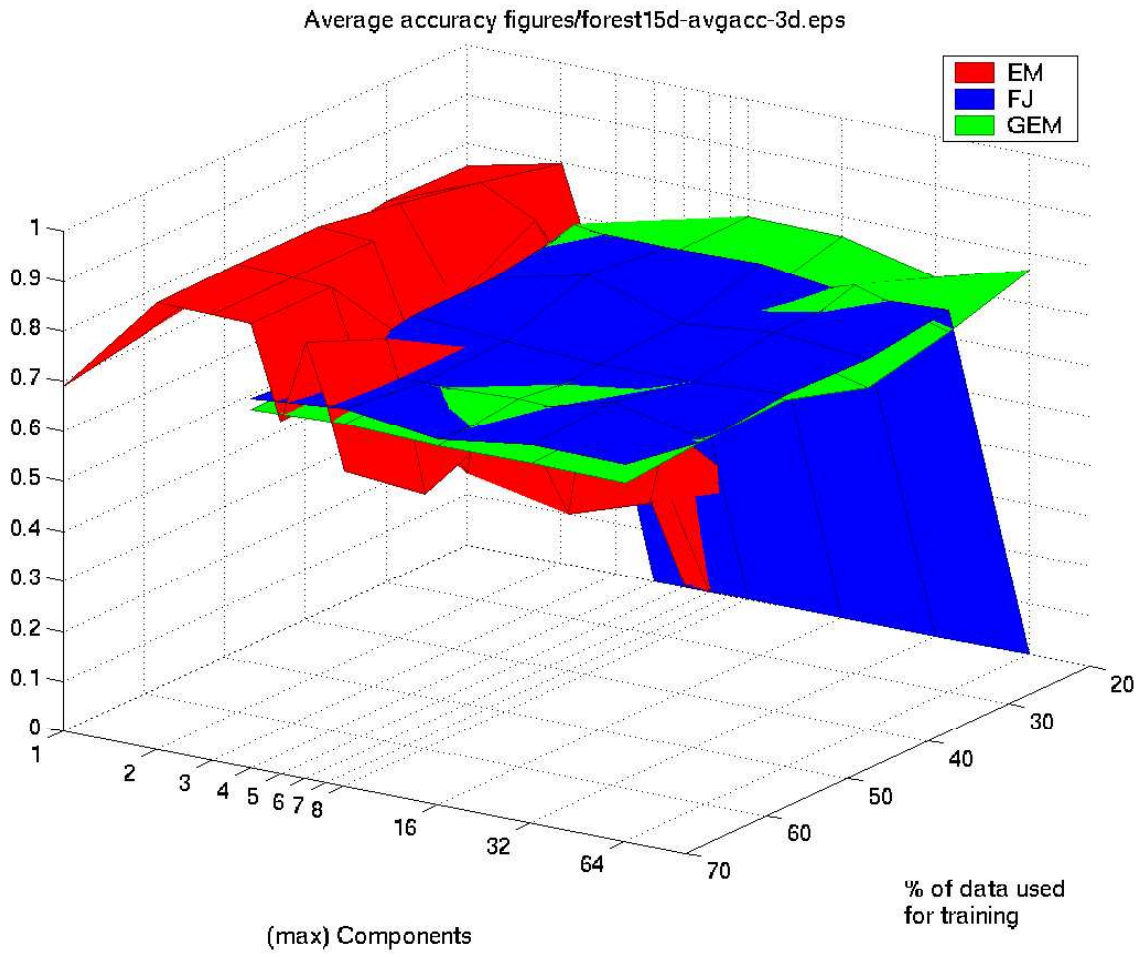


Figure 4: 15-d forest data, average classification accuracy.

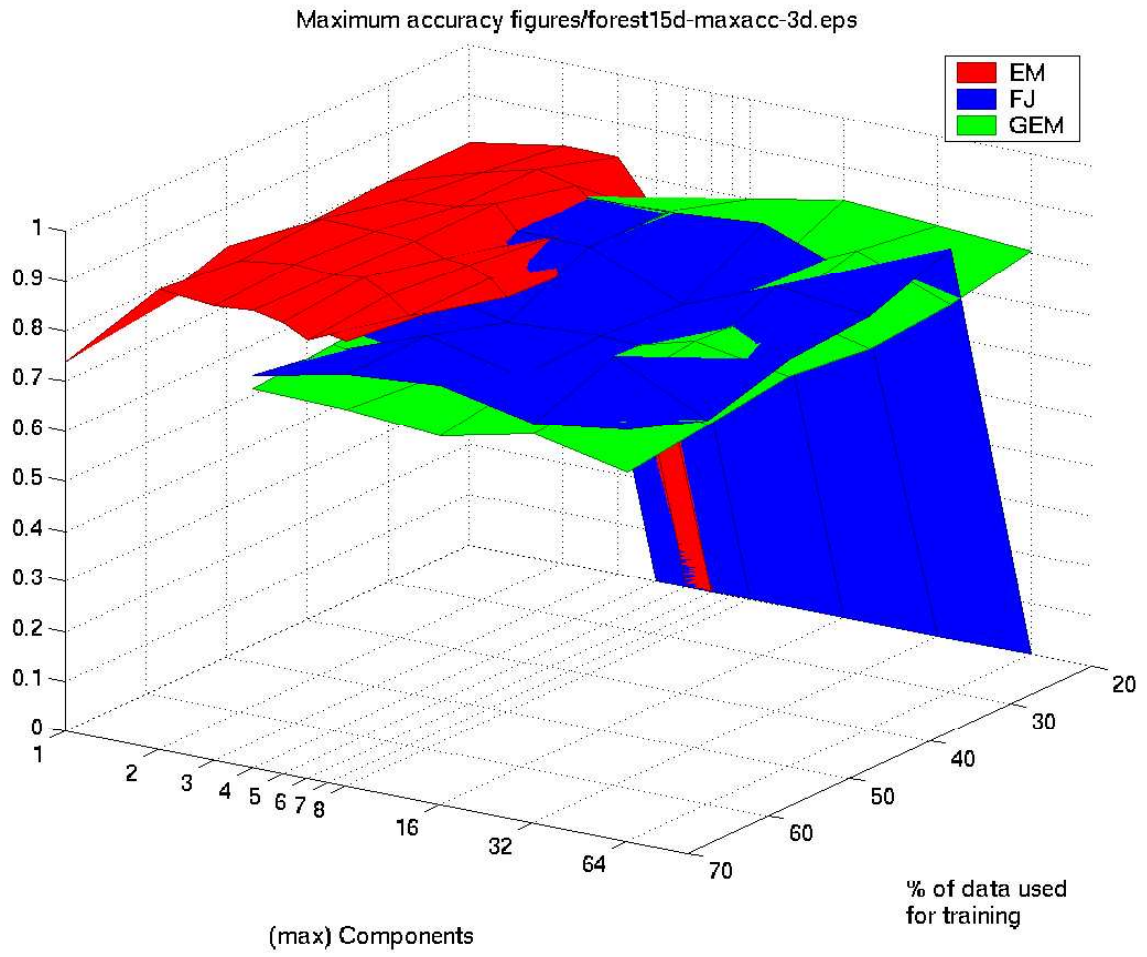


Figure 5: 15-d forest data, maximum classification accuracy.

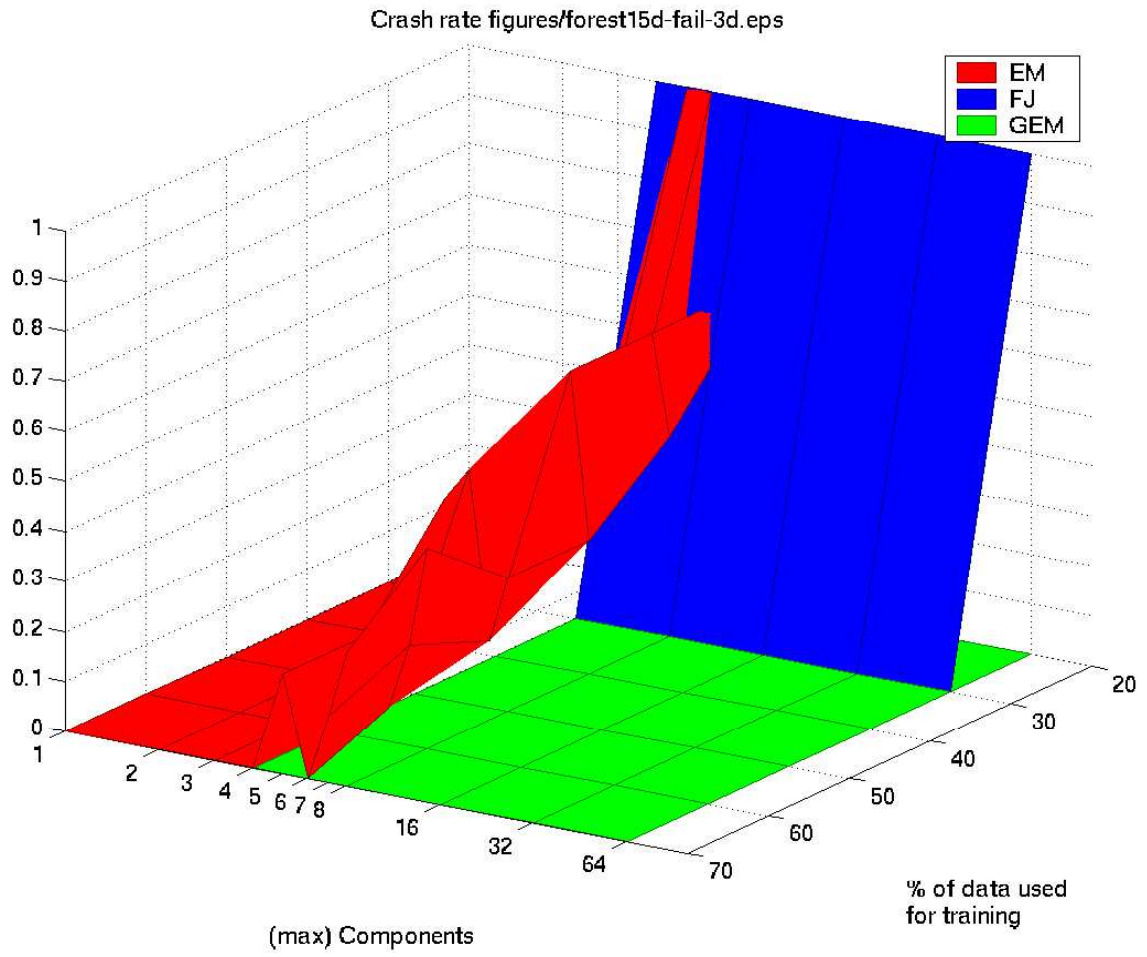


Figure 6: 15-d forest data, crash rate.

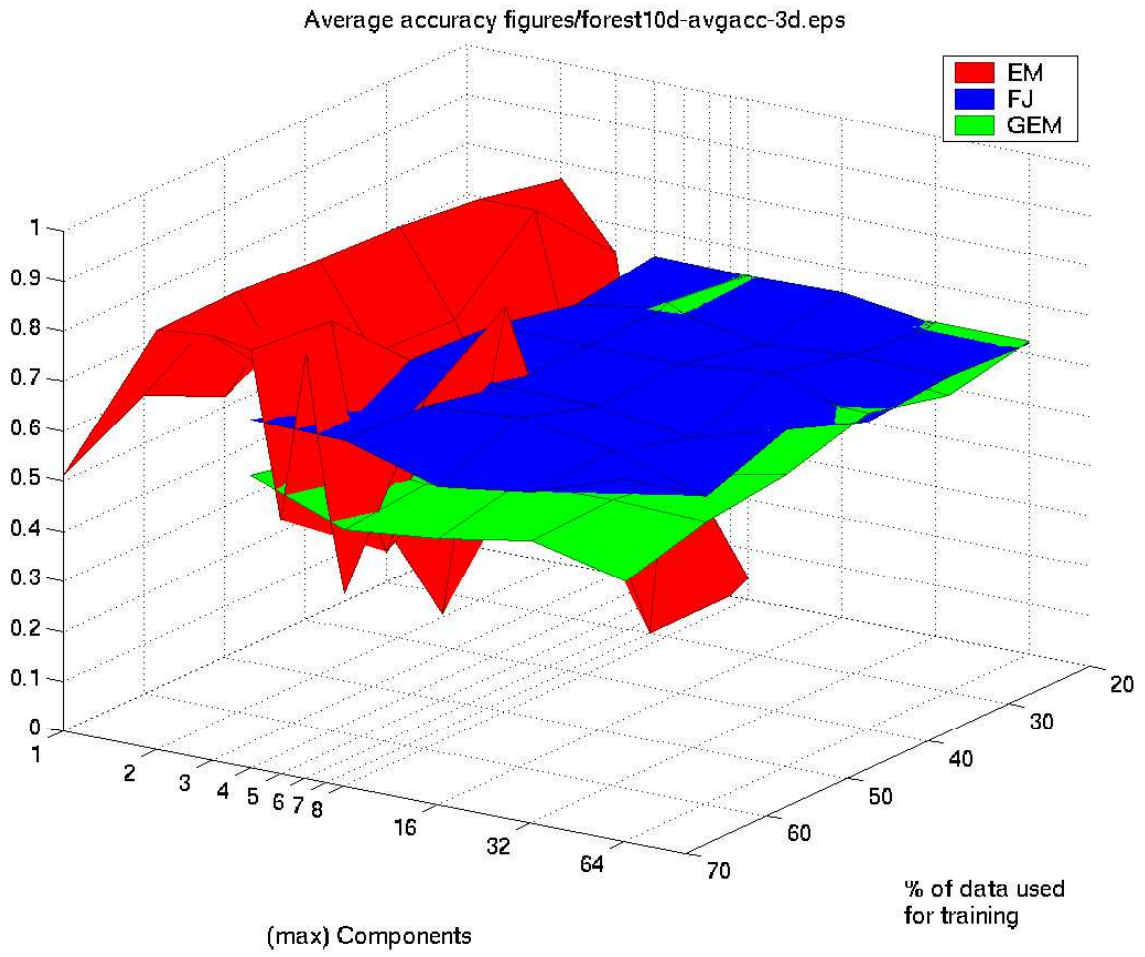


Figure 7: 10-d forest data, average classification accuracy.

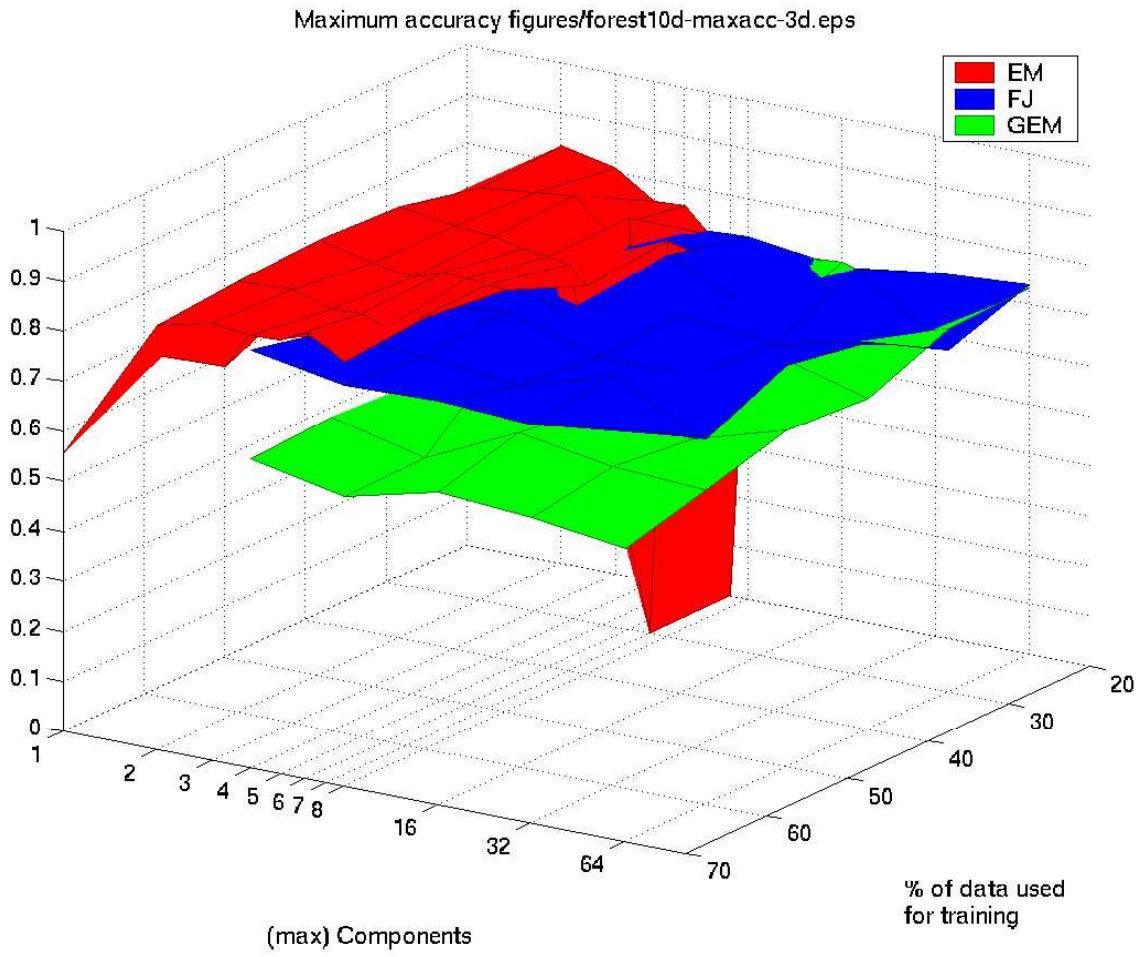


Figure 8: 10-d forest data, maximum classification accuracy.

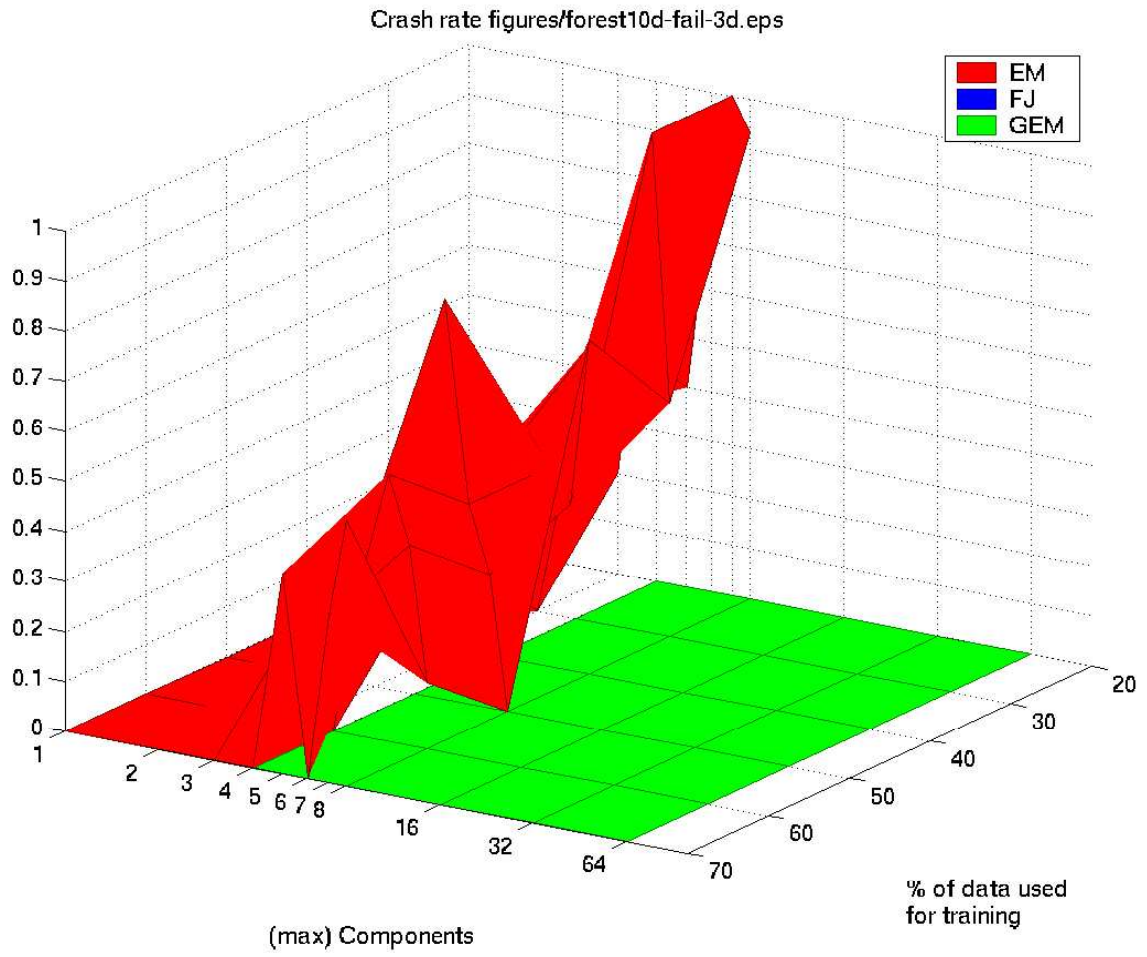


Figure 9: 10-d forest data, crash rate.

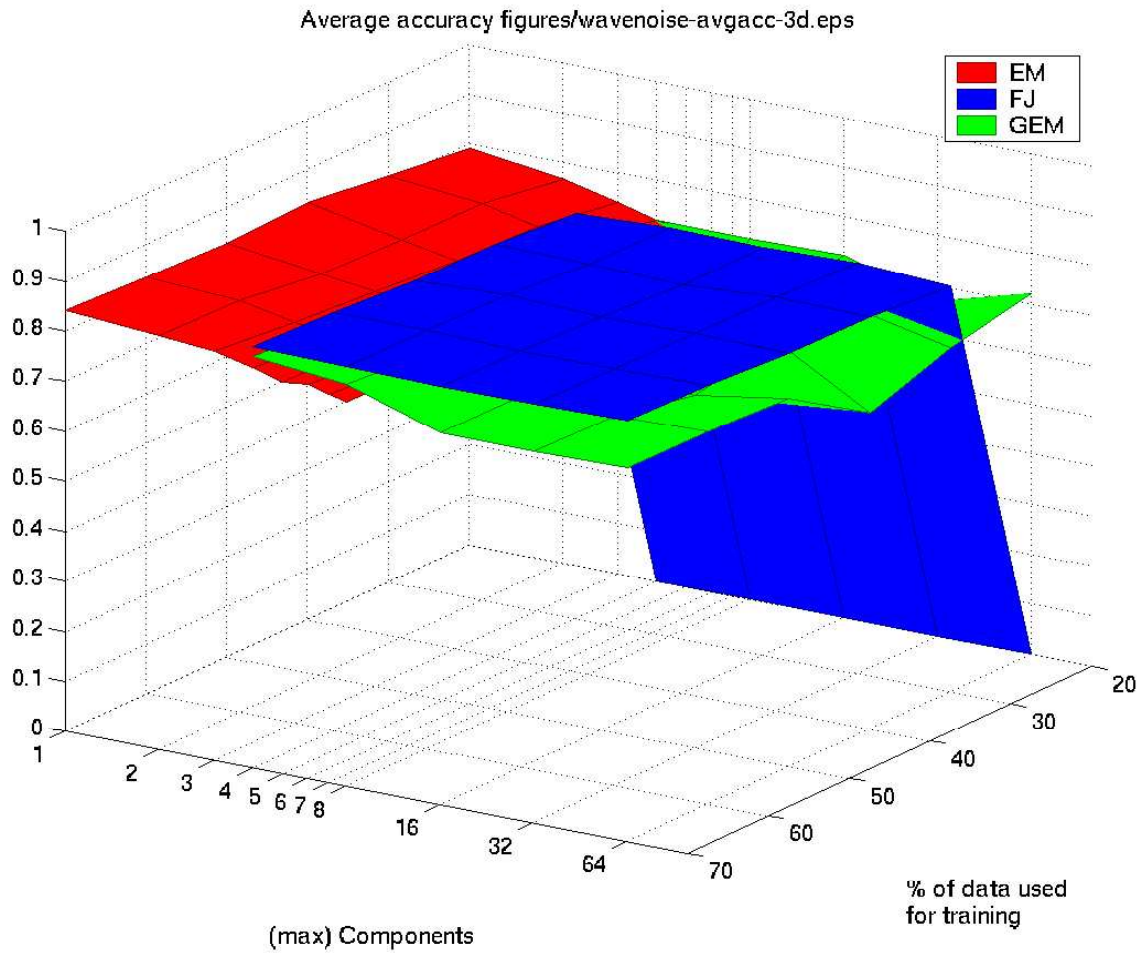


Figure 10: Waveforms and noise data, average classification accuracy.

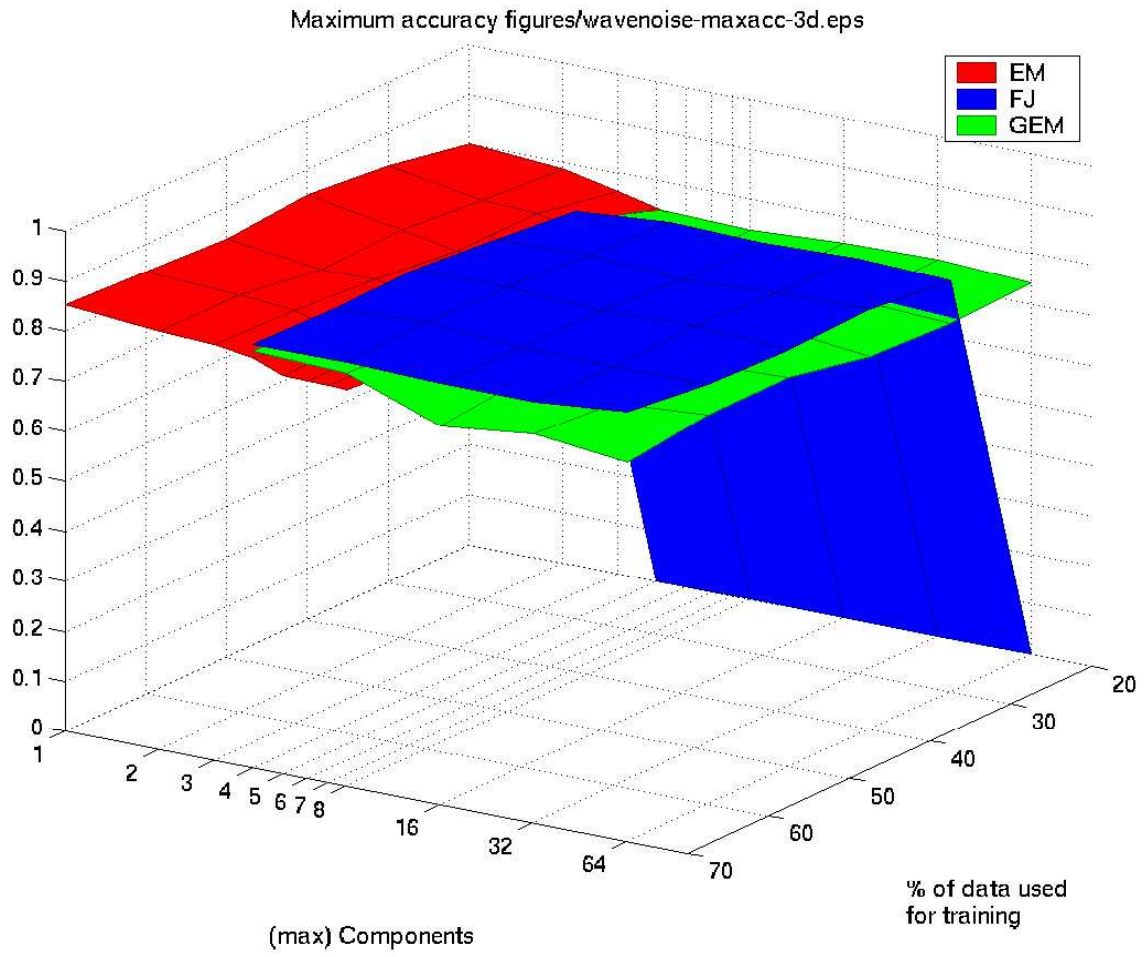


Figure 11: Waveforms and noise data, maximum classification accuracy.

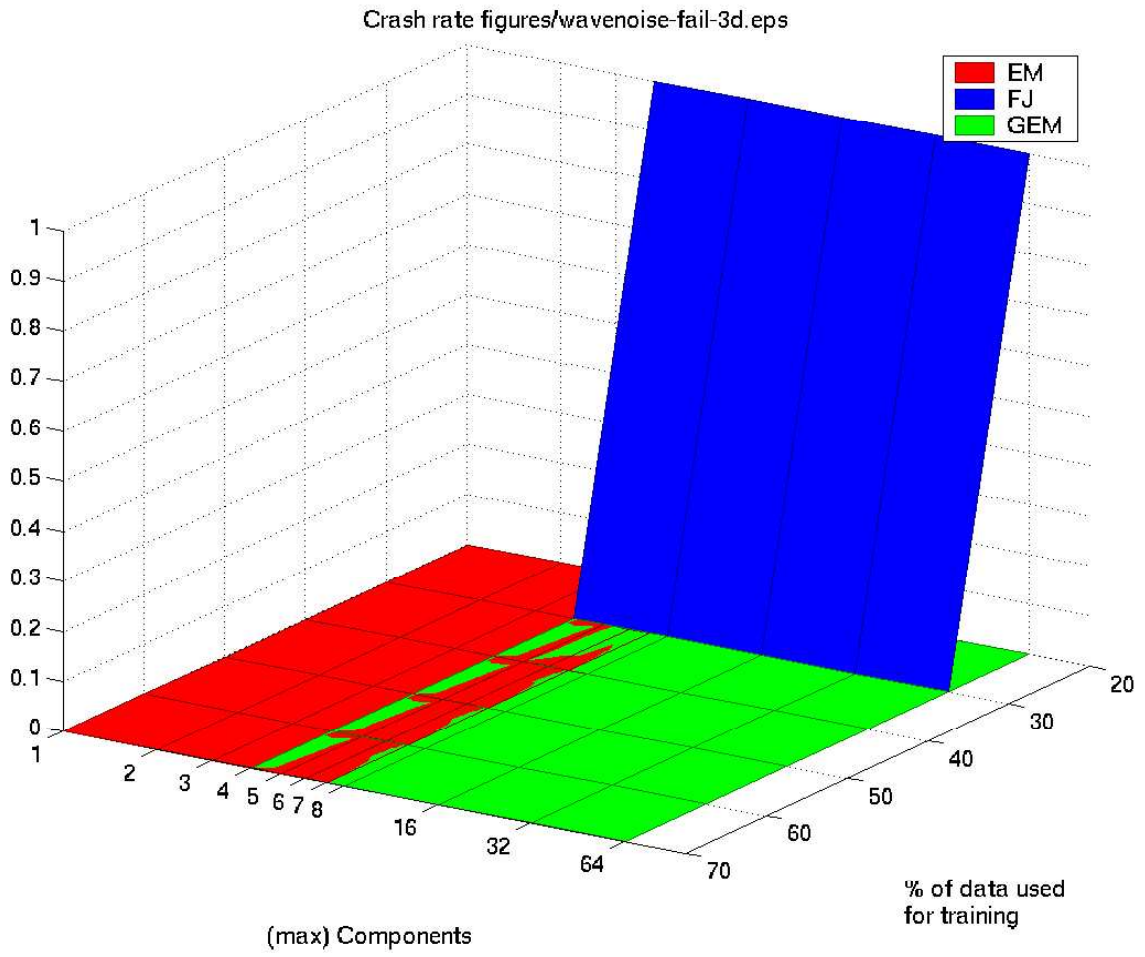


Figure 12: Waveforms and noise data, crash rate.

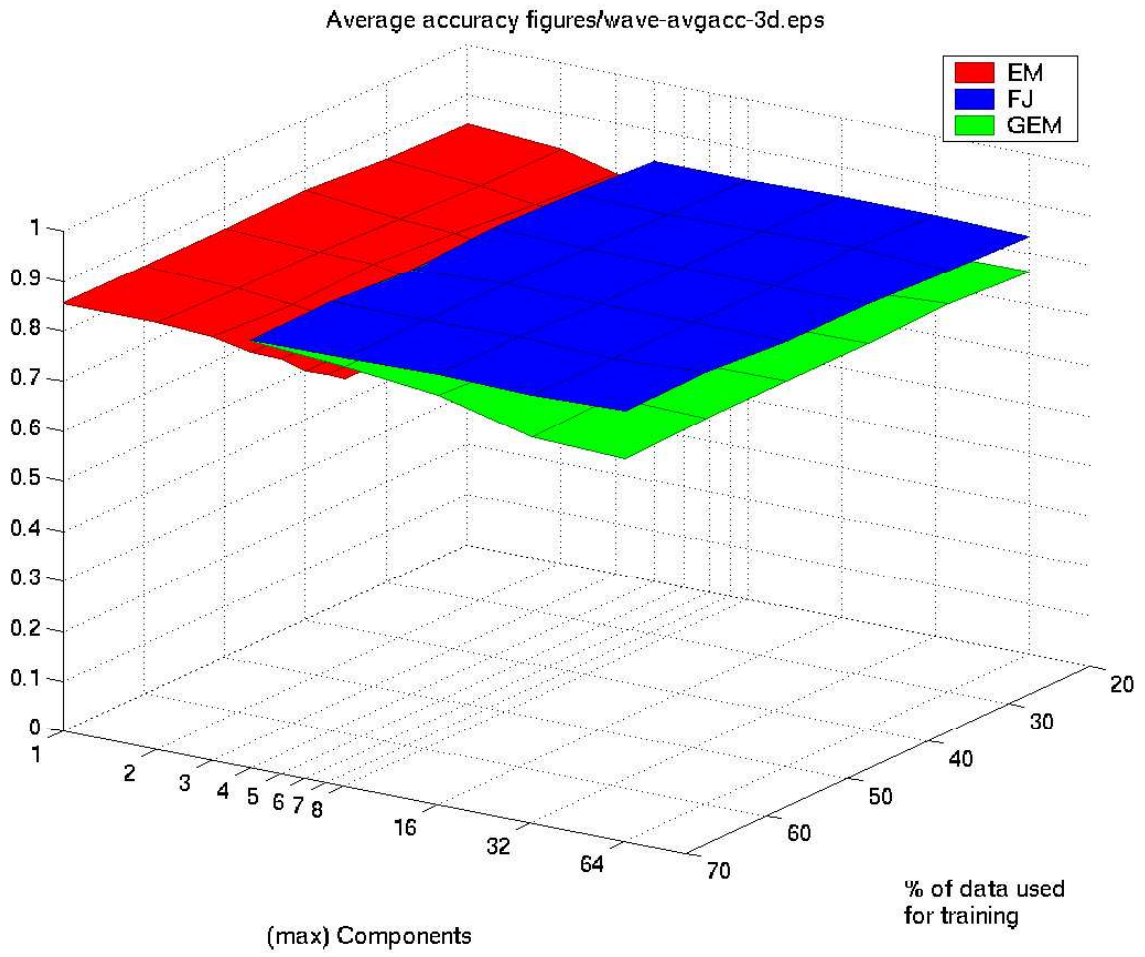


Figure 13: Waveforms data, average classification accuracy.

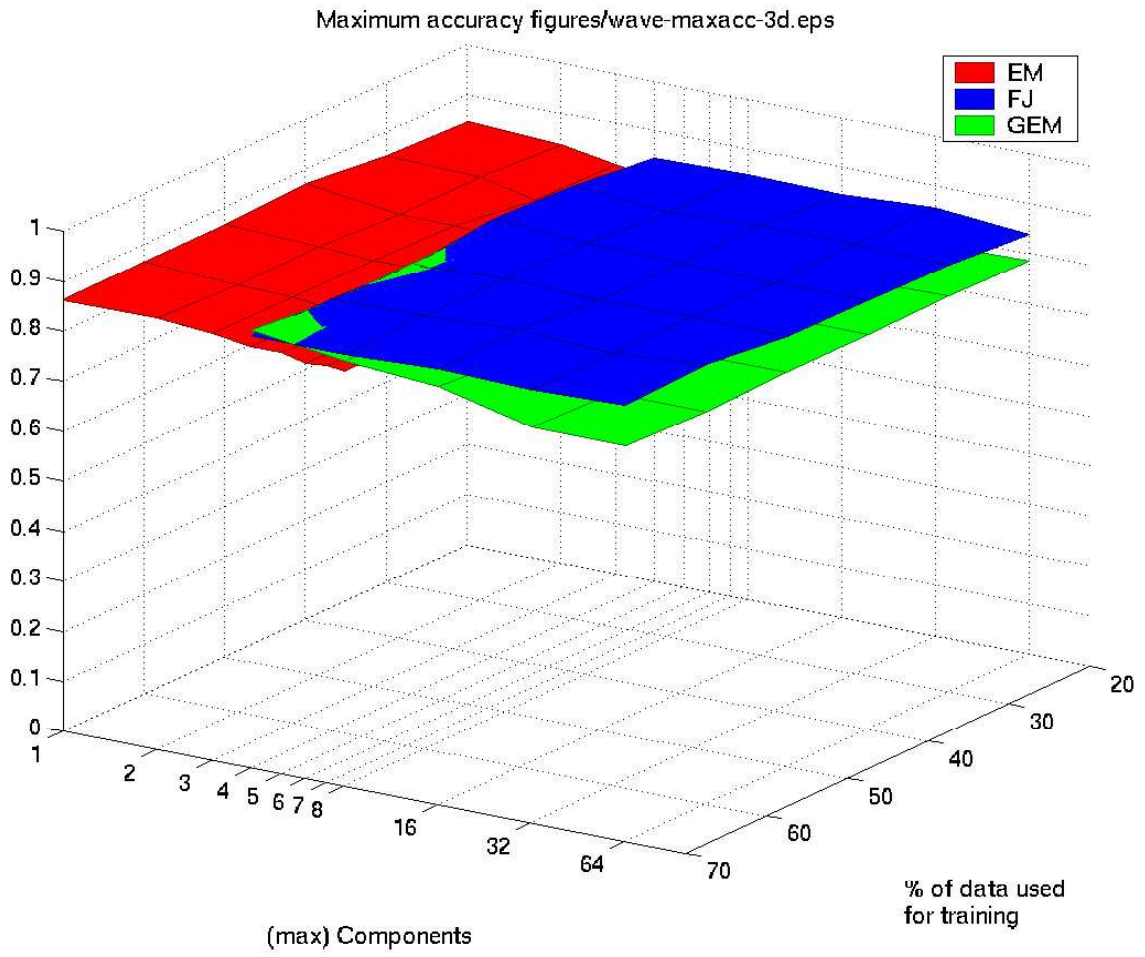


Figure 14: Waveforms data, maximum classification accuracy.

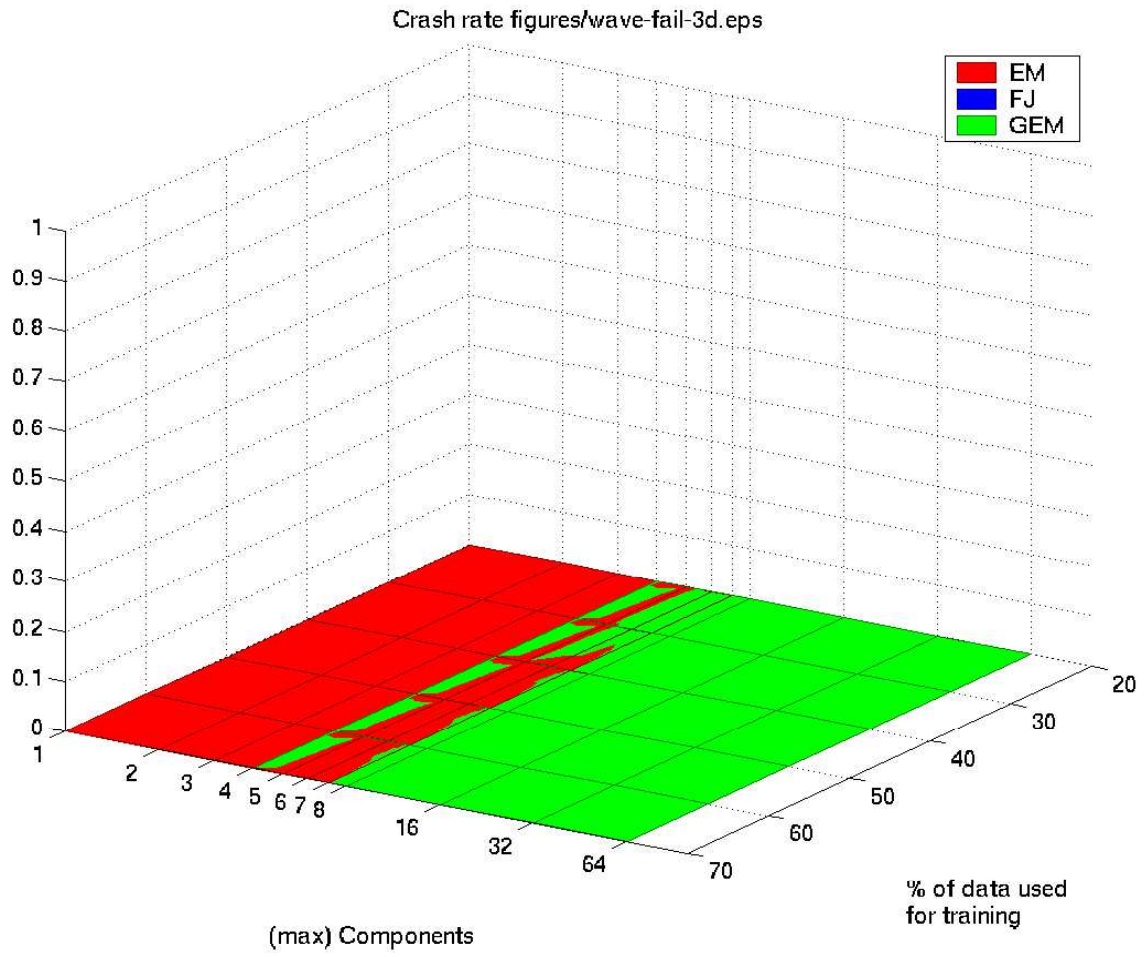


Figure 15: Waveforms data, crash rate.

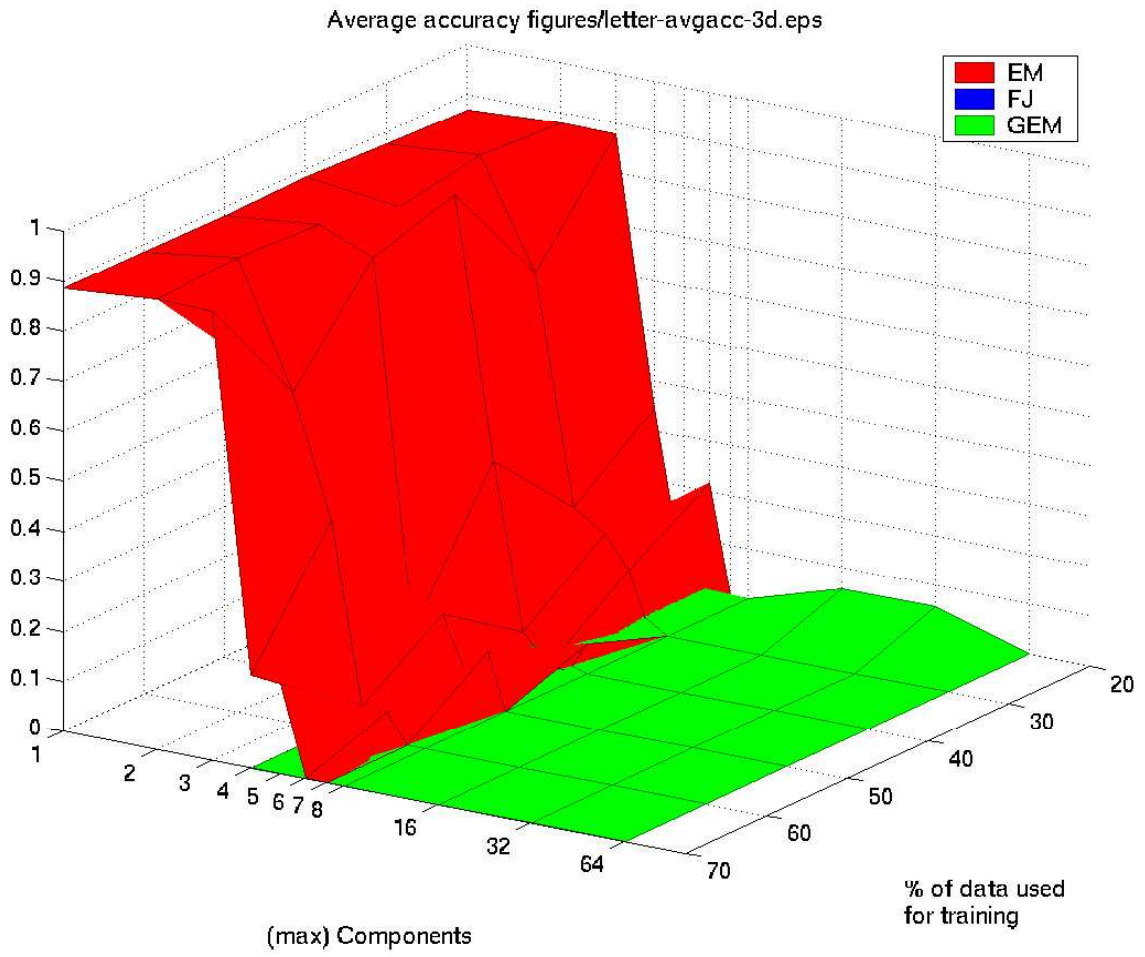


Figure 16: Letter image recognition data, average classification accuracy.

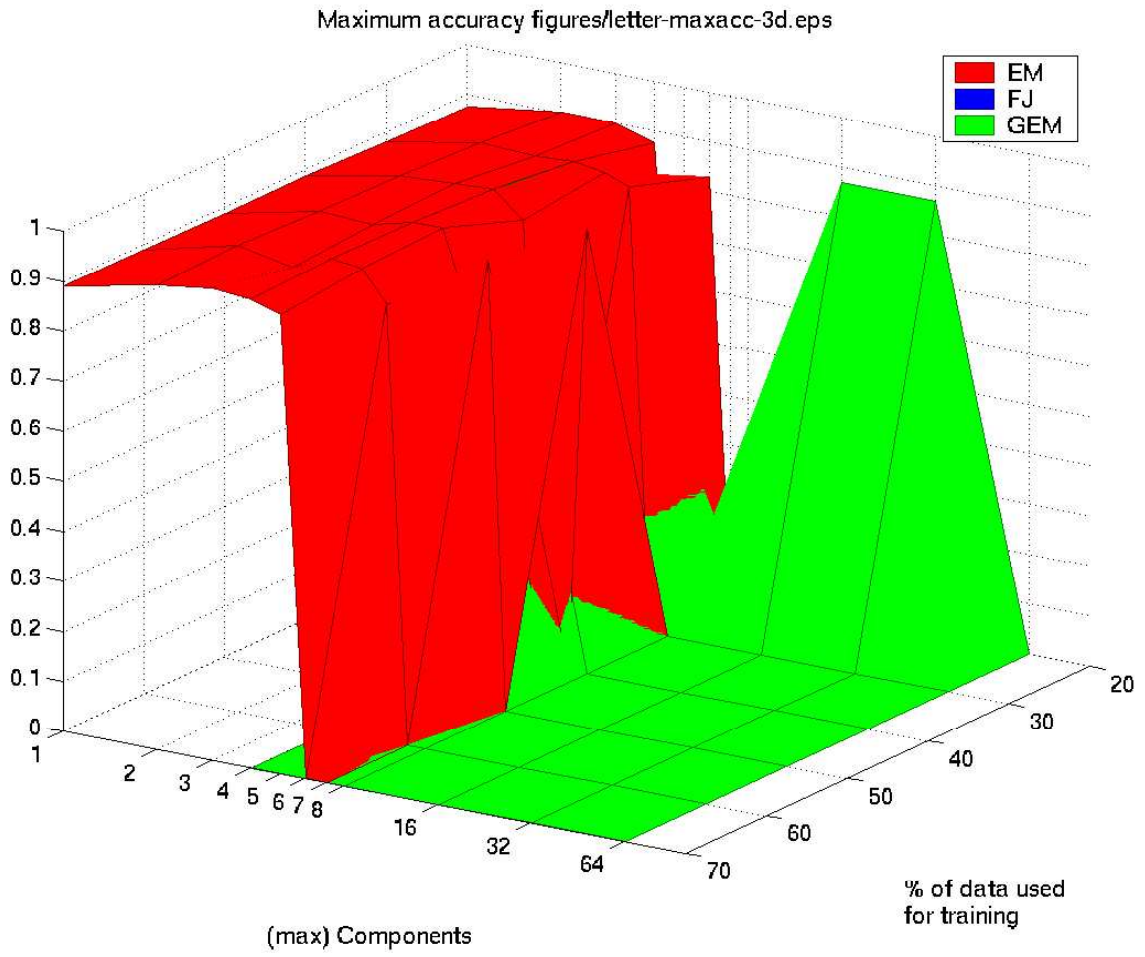


Figure 17: Letter image recognition data, maximum classification accuracy.

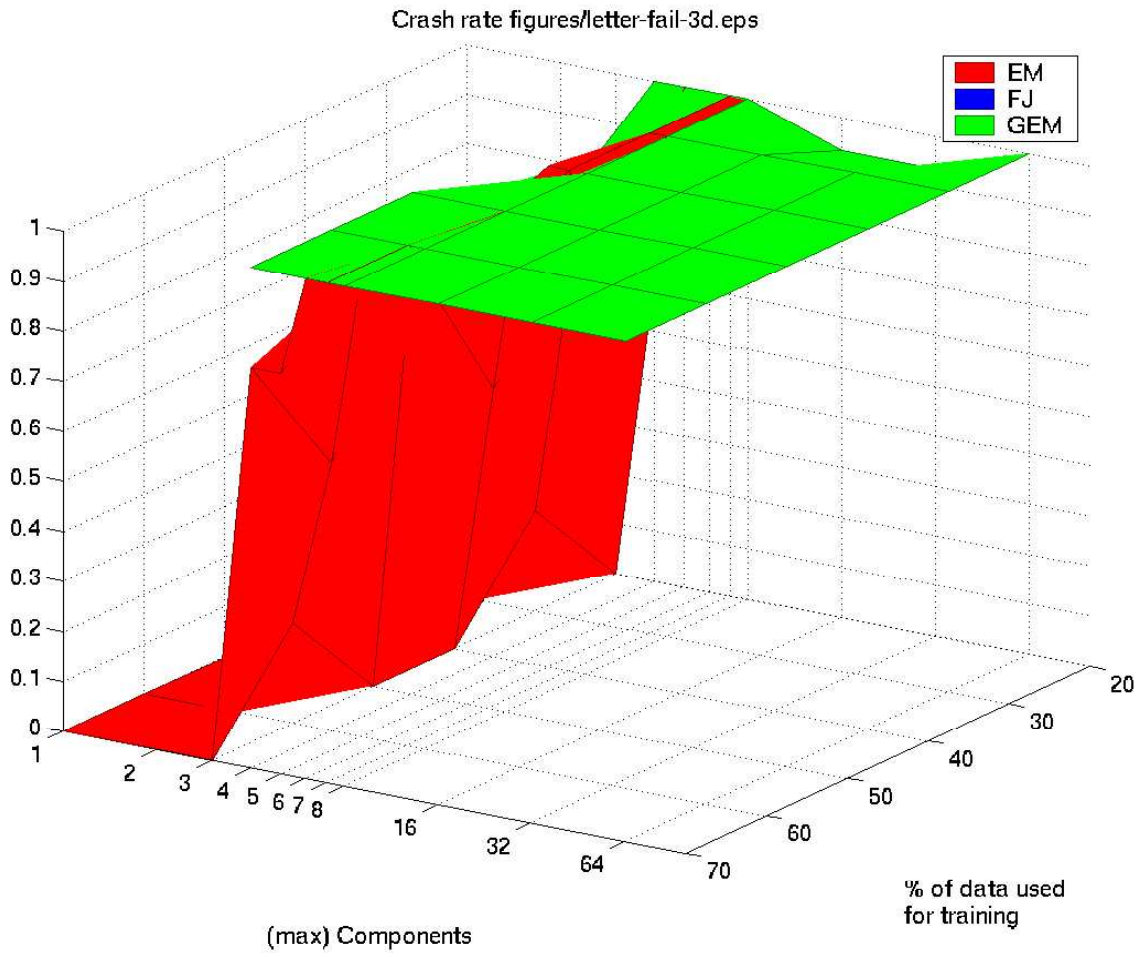


Figure 18: Letter image recognition data, crash rate.